

TELESCOPIC CHUTE

(FOR DUST FREE LOADING / DISCHARGING OF BULK MATERIAL)



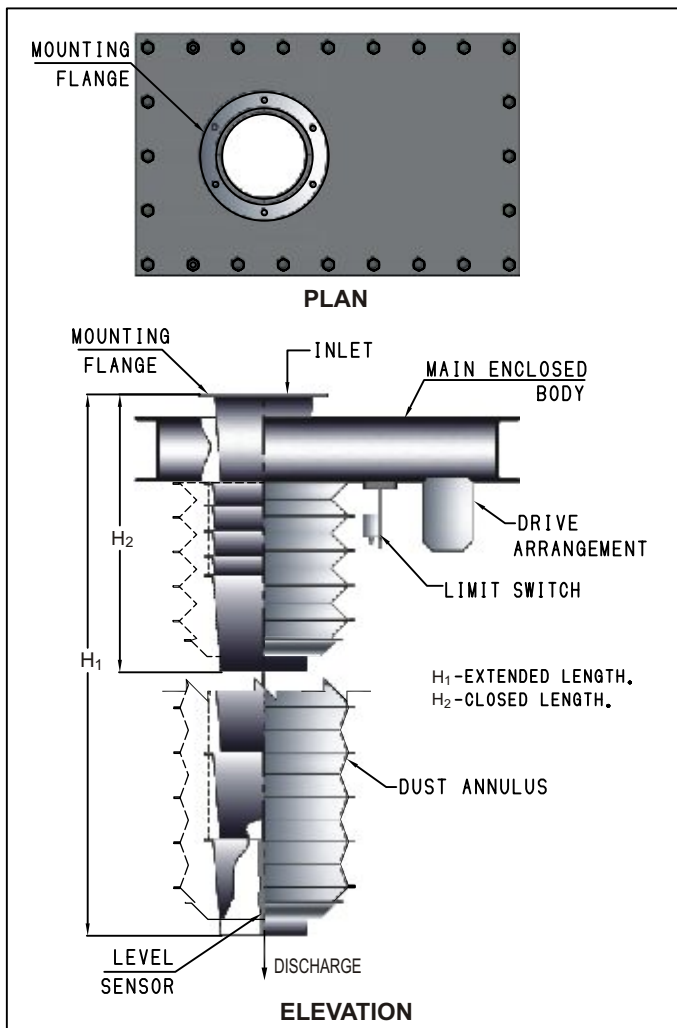
■ GENEROUS DESIGN ■ QUALITY INPUTS ■ EXCELLENT WORKMANSHIP ■ SYSTEM RELIABILITY

SALIENT FEATURES

- Minimizes dust emission.
- Reduces maintenance
- Maintains cleanliness
- Improves employee working condition & safety.
- Better environment

TELESCOPIC CHUTE

SCHEMATIC DRAWING



Application

- Loading ships & barges
- Filling store houses
- Loading trucks
- Stacking bulk/powder material

Data required for

Selecting Telescopic Chute

- Material to be handled
- Material Bulk density (in kg/m³)
- Particle size of material
- Application
- Open length
- Retracted length
- Mounting details of chute(if available)

Accessories

- Level switch
- Limit switch
- Control pendent

Material Handled

- Grain, coal, sugar, sand, salt, woodchips, fertilizers, aggregates etc.

Constructional Features

Casing	Precision fabricated out of IS 2062 sheet/plate material having bolted construction.
Discharging Cones	Precision fabricated out of IS 2062 sheet/plate material with/without wear resistant lining.
Winching arrangement	Consisting of winching drum with drive unit duly assembled Inside casing of telescopic chute
Electric Motor	Squirrel cage, brake motor, fan cooled of reputed make
Gear Box	Worm gear reducer with hollow input, of reputed make
Limit Switch	to limit maximum upward position of chute
Level Sensor(Optional)	Installed at bottom portion of chute, a)To sense level of material discharged and accordingly give signal to stop gate above Telescopic chute when discharging material into truck/tanker or b)To maintain height of chute when material is heaped(in progressive manner)
Proximity Sensor(Optional)	Installed at bottom portion of chute, to sense metal surface of tanker inlet and accordingly give signal to brake motor to stop downward movement of chute (Applicable for loading tankers)



ENGINEERING COMPANY PVT. LTD.

Regd. Office and Works : 90/7, Phase - I, G. I.D.C. Industrial Estate, F-Road, Post Box No. 70, Vatwa, Ahmedabad-382445. INDIA Telephone : + 91-79-25830131 / 40084131 Telefax : + 91-79-25836444
E-mail : aegisengg@yahoo.com, aegis@sify.co, sales@aegisengg.com Website : www.aegisengg.com

